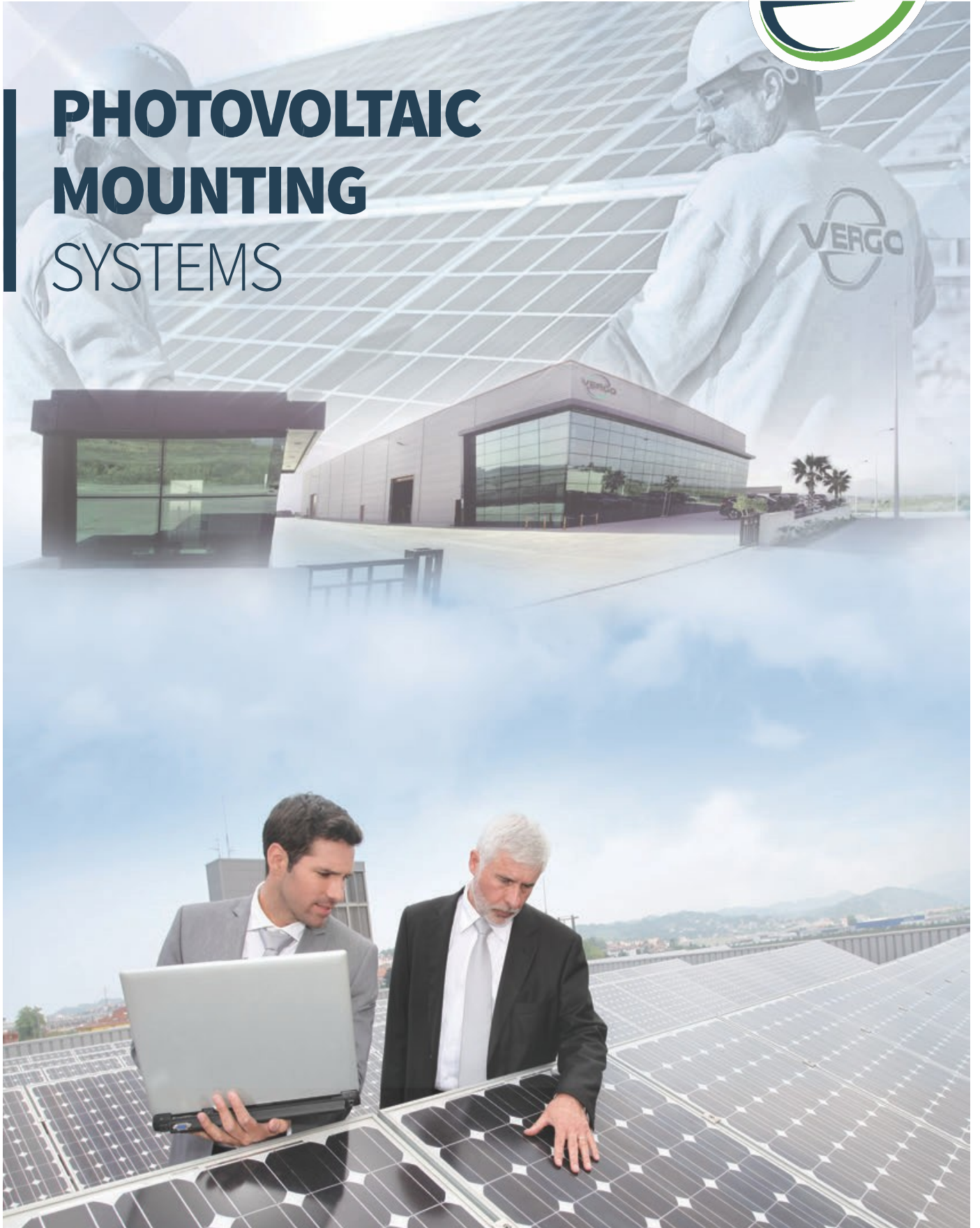




# PHOTOVOLTAIC MOUNTING SYSTEMS



**Vergo Enerji Sistemleri A.Ş.**

**Adres:** Halilbeyli OSB. Mah. Nif Cad. No:11 Kemalpaşa - İzmir **T:** 0232 880 70 80 / 0232 880 70 90 **F:** 0232 880 70 81

## TECHNICAL DATA SHEET

Design	*	Static calculation of rack according to Eurocode 1, 3 and 9
	*	Static calculation of rack according to AISI
	*	Static calculation of rack according to Local project requirements
	*	Detailed Static calculation report including wind, snow and earthquake loads
	*	Perfectly synchronized system components for easy and simple installation
Raw Materials	*	S235JR, S275JR, S355JR, S420MC or equivalent pre-galvanized steel grades
Materials	*	Pile-driven foundation posts made of hot-dip galvanized steel racks
	*	Fastening elements coated with MAGNI 565, Normtech and Cinkotech
	*	Red rust resistant (fastening device, bolts) (720-1.000 Hrs)
	*	Module clamps in aluminum stainless steel having grounding specification
Production & Quality	*	Flexible and on-time production according to project delivery schedule
	*	Product traceability: identification at all steps of the process with batch numbers
	*	Optimum quality control according to Vergo Quality Assurance Plan
	*	Quality inspection plan's sampling tests in compliance with ISO TS 2759-1
	*	Hot dip galvanizing quality inspection in respect of ISO TS EN ISO :1461
Management Systems	*	According to ISO 9001:2015, ISO14001:2015, OHSAS 18001:2007
Logistics	*	FOB, CIF or DAP Delivery options with proper packaging
Services (Optional)	*	Supervising on site with our professional team





## TECHNICAL DATA SHEET

### DESCRIPTION

### MATERIAL



C-Profile

STEEL – S235JR, S275JR,  
S355JR, S420MC



U-Profile

STEEL – S235JR, S275JR,  
S355JR, S420MC



Omega Profile

STEEL – S235JR, S275JR,  
S355JR, S420MC



L-Profile

STEEL – S235JR, S275JR,  
S355JR, S420MC







## TECHNICAL DATA SHEET

### DESCRIPTION

### MATERIAL



Square Tube

STEEL – S235JRH & S355JOH



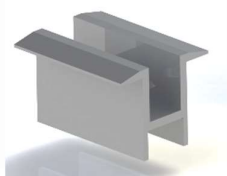
IPN-Profile Post

STEEL – S235JR & S355JR



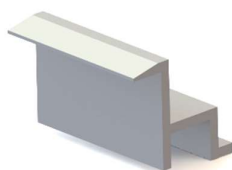
W-Beams

STEEL – S235JR & S355JR



Module Clamps (Middle)

ALUMINUM 6063



Module Clamps (Side)

ALUMINUM 6063

